

HAPPY CHRISTMAS  
AND A PROSPEROUS NEW YEAR  
FROM CORA, JOHN AND ALL THE STAFF  
AT THE MAN HO RESTAURANT



Wondering what to do this  
**Christmas  
& New Year?**

let us organise that special  
evening for you, your family and  
friends or your work colleagues

Call Cora now on  
**01582 723366**

just turn up and enjoy the occasion.

Email: [coralau@hotmail.co.uk](mailto:coralau@hotmail.co.uk)



**GIFT VOUCHERS  
NOW AVAILABLE**

Treat a customer or family  
member to an evening out,  
Contact Cora for more information

子揚樓  
**Chi Yeung**  
BAR & RESTAURANT

T: 0121 212 1888  
[www.chi-yeung.co.uk](http://www.chi-yeung.co.uk)

5-11 Fleet Street Birmingham B3 1JP

**Tin Tin Chinese  
Restaurant**

9F Waters Edge, Brindley Place,  
Broad Street, Birmingham B1 2HL.

Telephone: 0121 633 0888  
[www.tintinchineserestaurant.co.uk](http://www.tintinchineserestaurant.co.uk)

twitter

For the latest Brindleyplace news and view  
follow us at [twitter.com/brindleyplace](https://twitter.com/brindleyplace)



**DON'T FORGET**  
ASK FOR OUR NEW TAKE-AWAY MENU  
with FREE Delivery to your Home or Office

Tel: 01582 723366

[www.manholuton.co.uk](http://www.manholuton.co.uk)



MAN HO RESTAURANT: 72 DUNSTABLE ROAD, LUTON LU1 1EH. Tel: 01582 723366

## FORTHCOMING EVENTS & TRIBUTE ACTS 2011/12

### OCTOBER

Friday 14th	Michael Bubblé Tribute	£25pp
Saturday 15th	Michael Bubblé Tribute	£25pp
Saturday 22nd	Cher & All the Diva's	£25pp
Friday 28th	Tina Turner & Disco Classics	£25pp
Saturday 29th	"NEW" Elvis Evening	£25pp

### NOVEMBER

Friday 4th	Abba Tribute & 70's Evening	£30pp
Saturday 5th	Michael Bubblé Tribute	£25pp
Friday 11th	Amy Winehouse Tribute & Party Night	£25pp
Saturday 12th	Disco & Music Quiz	£25pp
Saturday 19th	"NEW" Elvis Evening	£25pp

### PRE-CHRISTMAS CELEBRATIONS

Friday 25th	Robbie Williams Tribute <i>from the Albert Hall to Knebworth</i>	£30pp
Saturday 26th	"NEW" Elvis Evening	£30pp

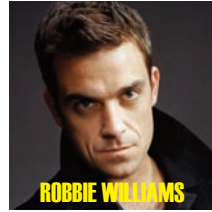
### DECEMBER CHRISTMAS PARTY

	<b>Lunchtime Menu without entertainment all of Dec</b>	<b>£18pp</b>
Friday 2nd	Disco & Music Quiz	£30pp
Saturday 3rd	Party Disco & Music Quiz	£30pp
Wednesday 7th	Michael Bubblé Tribute	£25pp
Thursday 8th	Elvis Tribute	£25pp
Friday 9th	Disco & Music Quiz	£30pp
Saturday 10th	Disco & Music Quiz	£30pp
Tuesday 13th	Dolly Parton Show	£25pp

Wednesday 14th	Michael Bubblé Tribute <b>Lunchtime &amp; Evening</b>	£25pp
Thursday 15th	Elvis Tribute	£25pp
Friday 16th	Disco & Music Quiz	£30pp
Saturday 17th	Disco & Music Quiz	£30pp
Sunday 18th	70's Music & Disco	£25pp
Monday 19th	Cher & All the Diva's	£25pp
Tuesday 20th	Country Western/Irish Evening	£25pp
Wednesday 21st	Michael Bubblé Tribute	£25pp
Thursday 22nd	Elvis Tribute	£25pp
Friday 23rd	Disco & Music Quiz	£30pp
Saturday 24th	Xmas Eve Dinner & Disco (Set Menu)	£20pp
Friday 30th	Robbie Williams Tribute <i>from the Albert Hall to Knebworth</i>	£25pp
Saturday 31st	New Years Eve Celebration & Disco	£45pp

### JANUARY 2012

Friday 6th	Abba Tribute Evening	£25pp
Saturday 7th	Robbie Williams Tribute <i>from the Albert Hall to Knebworth</i>	£25pp
Friday 13th	Michael Bubblé Tribute	£25pp
Saturday 14th	Country & Western Evening	£25pp
Friday 20th	Tina Turner & Disco Classics	£25pp
Saturday 21st	Cher & All the Diva's	£25pp
Friday 27th	Dolly Parton Show	£25pp
Saturday 28th	70's Evening & Disco	£25pp



The Management reserve the right to change themed evenings or menus without prior notice. For details of evenings not mentioned in this menu

**please contact us on 01582 723366**

Email: [coralau@hotmail.co.uk](mailto:coralau@hotmail.co.uk) Website: [www.manholuton.co.uk](http://www.manholuton.co.uk)

The Management reserve the right to change themed evenings without prior notice

# Christmas Menu 2011

**Lamb Spring Rolls**

**Smoking Chicken & Seaweed**

**Satay Chicken on Skewers**

**King Prawns on Toast**

\*\*\*

**Crispy Aromatic Duck**

\*\*\*

**Beef with Thai Spicy Sauce**

**Sizzling Chicken & Prawn**

**with Ginger and Spring Onion**

**Sweet and Sour Chicken**

**Fried Mixed Vegetables**

**Egg Fried Rice**

\*\*\*

**Ice Cream**



Please Note: A Non-Refundable Deposit of £10 per person is required when booking, balance due 2 weeks prior to evening. Please book early as these evenings are very popular (Menu may vary due to availability of seasonal produce)